



# SØKORTRETTELSESR 51




## CHART CORRECTIONS

Rettelse nr. / Correction no. 619 - 636


















© Kort & Matrikelstyrelsen  
ISSN 0905-1481

Kort / Chart	Rettelse nr. / Correction no.	Kort / Chart	Rettelse nr. / Correction no.
60	619	128 (INT 1379)	628
100	620	141 (INT 1370)	629, 630
102 (INT 1302)	621	143 (INT 1369)	631, 632
103 (INT 1303)	622, 623	152 (INT 1373)	633
104	624	154	634
112 (INT 1380)	625	196	635
117	626	2702	636
118	627		

Rettelse nr. / Correction no.  
Kort / Chart

<b>619</b> 60	<b>Rømø SE</b> Udtag / Delete		55°06,2'N 8°35,1'E  (51/1102 2009)
<b>620</b> 100	<b>Hatter Barn S</b> Tilføj / Insert ved / at		55°47,89'N 10°50,24'E  (27/584 2009)
<b>621</b> 102 (INT 1302)	<b>Hatter Barn S</b> Tilføj / Insert ved / at		55°47,89'N 10°50,24'E  (27/584 2009)
<b>622</b> 103 (INT 1303)	<b>Rødbyhavn SE</b> Tilføj medfølgende udsnit Insert accompanying block		54°34,4'N 11°27,7'E  (51/1079 2009)
<b>623</b> 103 (INT 1303)	<b>Sprogø N</b> Ref. Søkortrettelser / Chart Corrections 30/353 2009 Tilføj medfølgende udsnit Insert accompanying block		55°20,6'N 10°58,3'E  (FRV, december 2009)

2

- 624**  
104 **Rødbyhavn SE**  
Tilføj medfølgende udsnit  
*Insert accompanying block*  
54°34,4'N 11°27,7'E  
(51/1079 og 1080 2009)
- 625**  
112 (INT 1380) **Hatter Barn S**  
Ref. Søkortrettelser / Chart Corrections 25/277 2009  
Tilføj / *Insert*  AIS 55°47,89'N 10°50,24'E  
ved / at  Fl.R.3s  E20C (27/584 2009)
- 626**  
117 **Kronprins Frederiks Bro S**  
Ref. Søkortrettelser / Chart Corrections 41/454 2009  
Ret / *Amend*  55°50,579'N 12°02,533'E  
til / to   
Ret / *Amend*  Obstn 55°50,551'N 12°02,383'E  
til / to  (51/1091 2009)
- 627**  
118 **Kronprins Frederiks Bro S**  
Ref. Søkortrettelser / Chart Corrections 41/455 2009  
Ret / *Amend*  55°50,579'N 12°02,533'E  
til / to   
Ret / *Amend*  Obstn 55°50,551'N 12°02,383'E  
til / to  (51/1091 2009)
- 628**  
128 (INT 1379) **Hatter Barn S**  
Tilføj / *Insert*  AIS 55°47,89'N 10°50,24'E  
ved / at  Fl.R.3s  E20C (27/584 2009)
- 629**  
141 (INT 1370) **Hatter Barn S**  
Ref. Søkortrettelser / Chart Corrections 25/281 2009  
Tilføj / *Insert*  AIS 55°47,89'N 10°50,24'E  
ved / at  Fl.R.3s  E20C (27/584 2009)
- 630**  
141 (INT 1370) **Sprogø N**  
Ref. Søkortrettelser / Chart Corrections 30/354 2009  
Tilføj medfølgende udsnit  
*Insert accompanying block*  
55°20,6'N 10°58,3'E  
(FRV, december 2009)
- 631**  
143 (INT 1369) **Sprogø N**  
Ref. Søkortrettelser / Chart Corrections 30/355 2009  
Tilføj medfølgende udsnit  
*Insert accompanying block*  
55°20,6'N 10°58,3'E  
(FRV, december 2009)


632

143 (INT 1369)

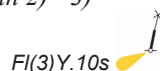
Plan C

**Sprogø N**

Ref. Søkortrettelser / Chart Corrections 30/356 2009

Udtag område begrænset af  mellem 1) - 4)Delete area bounded by  joining 1) - 4)

Udtag på 2) - 3) / Delete in 2) - 3)



- 1) 55°21,279'N 10°59,300'E  
ramme / border
- 2) 55°21,290'N 10°59,510'E
- 3) 55°20,972'N 10°59,737'E
- 4) 55°20,589'N 10°59,300'E  
ramme / border

(FRV, december 2009)

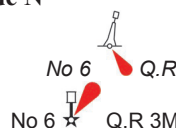
633

152 (INT 1373)

**Holdnæs Middelgrunde N**

Ret / Amend

til / to



- 54°52,708'N 9°37,480'E  
justeret / adjusted position

(N/S 51 2009)

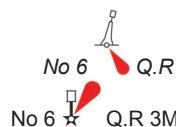
634

154

**Holnis N**

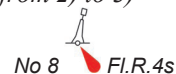
Ret på 1) / Amend in 1)

til / to



- 1) 54°52,708'N 9°37,480'E  
justeret / adjusted position

Flyt fra 2) til 3) / Move from 2) to 3)



- 2) 54°53,0'N 9°35,8'E
- 3) 54°53,100'N 9°35,700'E

(N/S 51 2009)

635

196

**Rødbyhavn SE**

Ref. Søkortrettelser / Chart Corrections 42/505 2009

Tilføj medfølgende udsnit 1) - 2)

Insert accompanying block 1) - 2)

- 54°34,4'N 11°27,7'E

Bemærk at udsnittene er vinklet forskelligt, samt at de overlapper hinanden af hensyn til rettelsens omfang

*Note that the blocks are differently angled and that they overlap each other due to the extent of the correction*

(51/1079 og 1080 2009)

636

2702

**Shannon S. Freeden Bugt**

Ref. Søkortrettelser / Chart Corrections 47/553 2009

Flyt fra 1) til 2) +<sup>(2)</sup>

Move from 1) to 2)

- 1) 74°57,0'N 17°43,2'W
- 2) 74°57,7'N 17°48,9'W

(M/S Arina Arctica, 16. december 2009)

## Havneoplysninger

*www.danskehavnelods.dk*

**Esbjerg Havn**  
Anmærkning opdateret.

(51/1101 2009)

**Århus Havn**  
Anmærkning opdateret.

(51/1092 2009)

## *Den grønlandske Havnelods*

**Side 220 - Qeqertarsuaq (Godhavn)**

Skitsen:

Tilføj medfølgende udsnit.

(51/1104 2009)

## Sejladsanvisninger

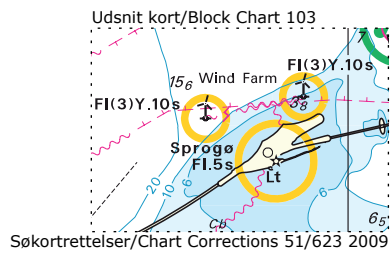
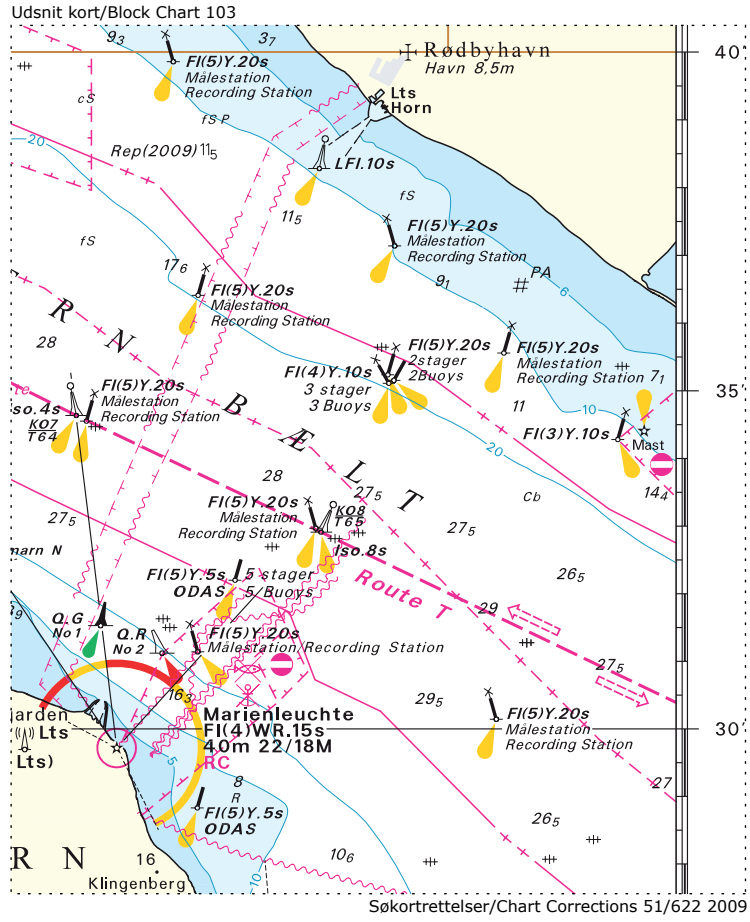
### *Den grønlandske Lods 2. del, Østgrønland*

Ref. Søkortrettelser 47 2009

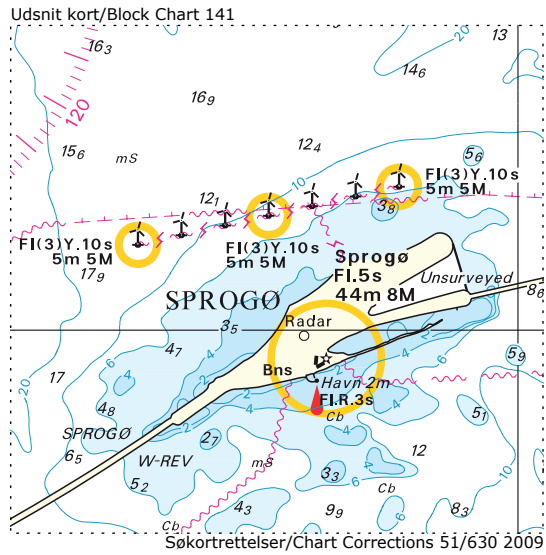
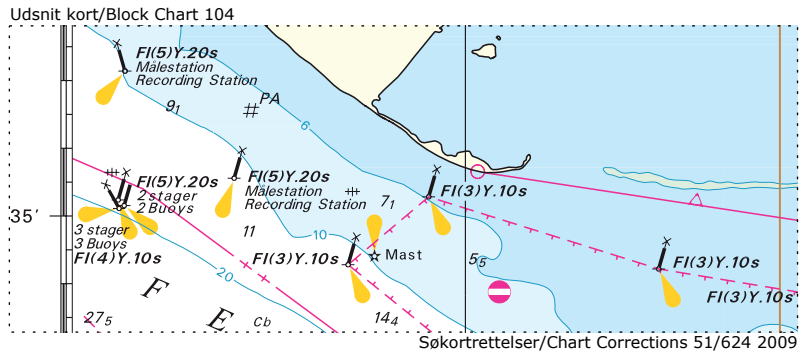
**Side 349.** Tidligere rettelse udgår og erstattes med:

Et rev på ca. 40 m i diameter med en dybde på 2 m er rapporteret (2009) på position 74°57,7' N 17°48,9' W, ca. 3,5 sm WNW for Kap Philip Broke.

(M/S Arina Arctica, 16. december 2009)



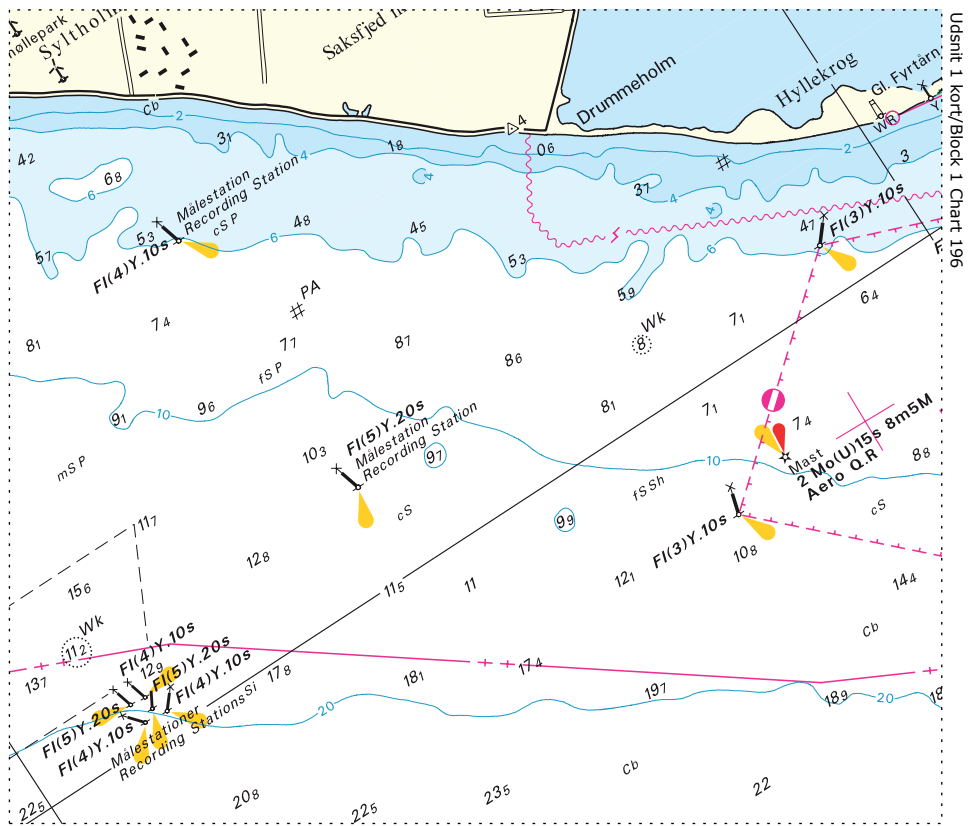
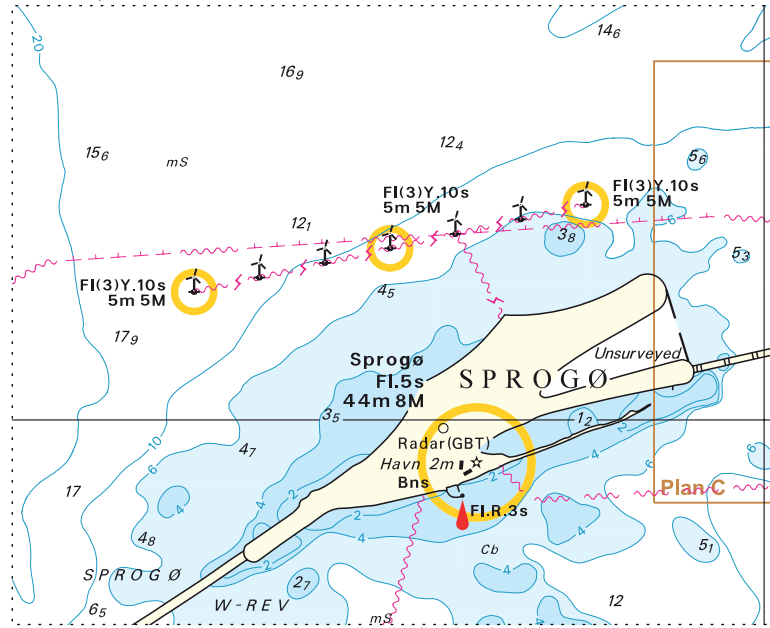
BLANK



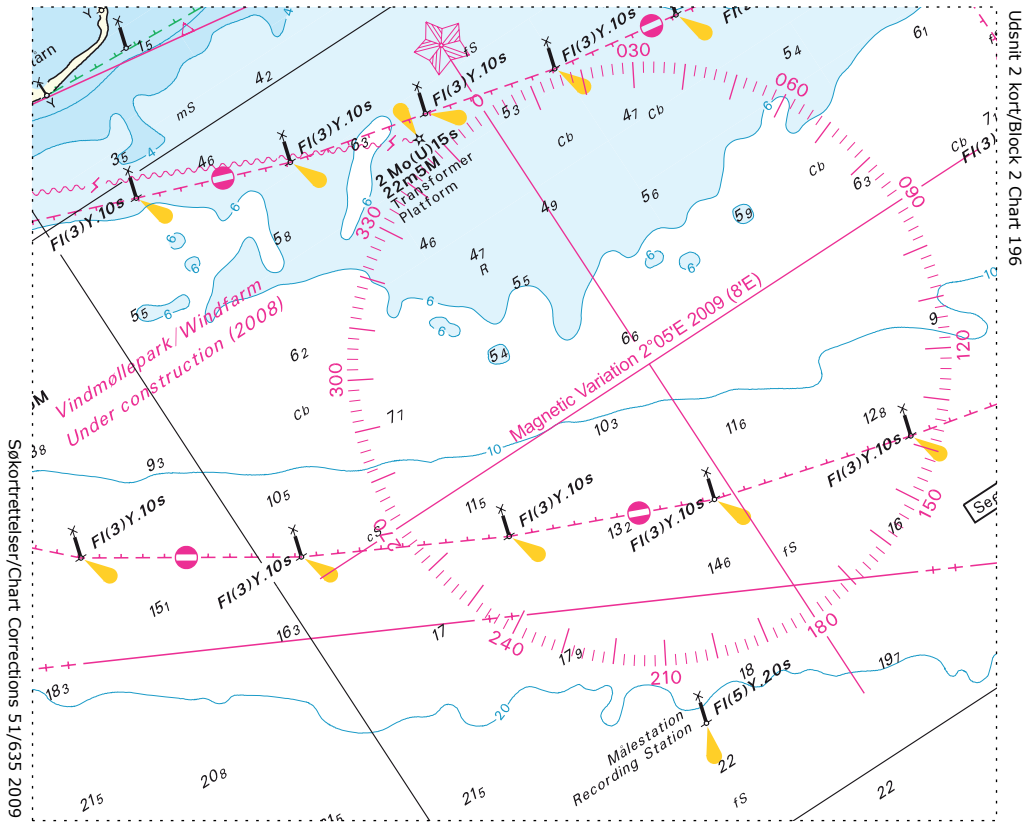
BLANK



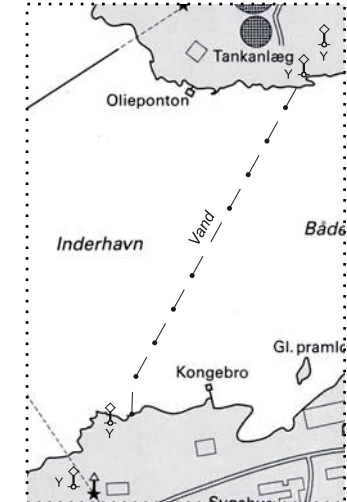
Kort udsnit/Block Chart 143



BLANK



Udsnit skitse/Block sketch Qeqertarsuaq (Godhavn)



Søkortrettelser/Chart Corrections 51 2009

Søkortrettelser / *Chart Corrections*  
på internet  
<http://www.kms.dk>

---

"Søkortrettelser" indeholder de officielle rettelser til danske, grønlandske og færøske søkort. "Søkortrettelser" fås i abonnement og udsendes desuden som bilag til Efterretninger for Søfarende (EfS). Oplysningerne i parentes efter rettelserne refererer til EfS (nr./løbenr. år) eller anden kilde. Abonnement på "Søkortrettelser" kan tegnes for et kalenderår ved henvendelse til: Iver C. Weilbach & Co. A/S, Toldbodgade 35, DK-1253 København K. Telefon: 33 34 35 60. E-post: [nautical@weilbach.dk](mailto:nautical@weilbach.dk). Pris for levering i 2009 kr. 103 inkl. moms.

"Chart Corrections" contains the official corrections to Danish, Greenland and Faroese charts. "Chart Corrections" are available as a subscription. Furthermore, they are annexed "Efterretninger for Søfarende" (Danish NtM). The figures in brackets after the corrections refer to EfS (no./serial no. year) or other source. For orders or enquiries about subscription please contact: Iver C. Weilbach & Co. A/S, Toldbodgade 35, DK-1253 København K. Telephone: 33 34 35 60. E-mail: [nautical@weilbach.dk](mailto:nautical@weilbach.dk). Price for subscription in 2009 DKK 103 VAT included.

---

© Kort & Matrikelstyrelsen 2009

Gengivelse er tilladt med tydelig kildeangivelse. Havneplaner mærket "© Kort & Matrikelstyrelsen" må ikke gengives eller reproduceres medmindre der foreligger skriftlig tilladelse hertil.