



SØKORTRETTELSE

21

DANISH CHART CORRECTIONS

Rettelse nr. / Correction no.

200 - 214

Kort / Chart	Rettelse nr. / Correction no.	Kort / Chart	Rettelse nr. / Correction no.
60	200	155	209
61	201	159 (INT 1374)	210
95 (INT 1451)	202, 203	160	211
141 (INT 1370)	204	188	212
143 (INT 1369)	205	1314	213
151 (INT 1375)	206	1352	214
152 (INT 1373)	207, 208		

Søkortrettelser / Chart Corrections

på / via

www.kms.dk

"Søkortrettelser" indeholder de officielle rettelser til danske, grønlandske og færøske søkort.

Oplysningerne i parentes efter rettelserne refererer til EFS (nr./løbenr. år) eller anden kilde.

"Chart Corrections" contains the official corrections to Danish, Greenland and Faroese charts.

The figures in brackets after the corrections refer to EFS (no./serial no. year) or other source.

© Kort & Matrikelstyrelsen 2011

Gengivelse er tilladt med tydelig kildeangivelse.

Havneplaner mærket "© Kort & Matrikelstyrelsen" må ikke gengives eller reproducere medmindre der foreligger skriftlig tilladelse hertil.







Reproduction is permitted with clear source indication.








Port plans labelled "© Kort & Matrikelstyrelsen" must not be reproduced or duplicated unless there is written consent.

Kort & Matrikelstyrelsen, Søkortområdet, Rentemestervej 8, 2400 København NV, Tlf: 72 54 50 00, soe@kms.dk, www.kms.dk

National Survey and Cadastre, Hydrographic Office, Rentemestervej 8, DK-2400 Copenhagen NV, Tel: +45 72 54 50 00, soe@kms.dk, www.kms.dk

Rettelse nr. /
Correction no.
Kort / Chart

200 60	Esbjerg Havn Tilføj medfølgende udsnit <i>Insert accompanying block</i>		55°27,8'N 008°26,2'E (21/631 2011)
201 61	Esbjerg Havn Tilføj medfølgende udsnit <i>Insert accompanying block</i>		55°27,5'N 008°26,3'E (21/631 2011)
202 95 (INT 1451)	Esbjerg Havn Tilføj medfølgende udsnit 1 og 2 <i>Insert accompanying blocks 1 and 2</i>		55°28,5'N 008°24,6'E (21/631 2011)
203 95 (INT 1451) Plan	Esbjerg Havn Erstat planer med medfølgende planer <i>Replace plans by accompanying plans</i>		(21/631 2011)
204 141 (INT 1370)	Storebælt. Badstue Rev N Ret <i>Amend</i> til to	  FI(3)G.10s (1.4.-15.11.)	55°19,43'N 011°07,29'E (21/618 2011)
205 143 (INT 1369)	Storebælt. Badstue Rev N Ret <i>Amend</i> til to	  FI(3)G.10s (1.4.-15.11.)	55°19,43'N 011°07,29'E (21/618 2011)
206 151 (INT 1375)	Als Fjord. Ballebro NNW Ret <i>Amend</i> til to	++ PA  Wk	55°00,689'N 009°39,721'E justeret / <i>adjusted</i> position (21/623 2011)
207 152 (INT 1373)	Als Fjord. Ballebro NNW Ret <i>Amend</i> til to	++ PA  Wk	55°00,689'N 009°39,721'E justeret / <i>adjusted</i> position (21/623 2011)

208 152 (INT 1373)	Augustenborg Fjord. Sebbelev W Tilføj Insert	 Wk	54°57,138'N 009°49,450'E (21/624 2011)
209 155	Augustenborg Fjord. Sebbelev Nor W Tilføj Insert	 Wk	54°57,138'N 009°49,450'E (21/624 2011)
210 159 (INT 1374)	Als Fjord. Ballebro NNW Ret Amend til to	++ PA  Wk	55°00,689'N 009°39,721'E justeret / adjusted position (21/623 2011)
211 160	Storebælt. Badstue Rev N Ret Amend til to	  FI(3)G.10s (1.4.-15.11.)	55°19,43'N 011°07,29'E (21/618 2011)
212 188	Darlowo NW Tilføj Insert	++	54°42,91'N 015°49,12'E (WZ 20/459 2011)
213 1314	Talerulik Tilføj Insert	651 	65°00,49'N 052°21,12'W (21/634 2011)
214 1352 Plan	Talerulik Tilføj Insert	651 	65°00,49'N 052°21,12'W (21/634 2011)

HAVNEOPLYSNINGER***www.danskehavnelods.dk*****Augustenborg Havn**

Anmærkning tilføjet.

*(21/625 2011)***Esbjerg Havn**

Anmærkning og planer opdateret.

*(21/631 2011)***Augustenborg Yachthavn**

Anmærkning tilføjet.

*(21/625 2011)***Faaborg Havn**

Anmærkning opdateret.

*(21/619 2011)***Bandholm Havn**

Afsnittet Havnekontor opdateret.

*(Alfr. Hovmand, Bandholm, 13. maj 2011)***Hvide Sande Havn**

Anmærkning tilføjet.

*(21/630 2011)****Den danske Havnelods, Erhvervshavne*****Side 44 - Bandholm Havn**

Erstat afsnittet Havnekontor med:

Telefon 54 76 36 11

Telefax 54 76 36 12

E-post: havn@hovmand.dk

Hjemmeside: www.hovmand.dk


*(Alfr. Hovmand, Bandholm, 13. maj 2011)***Side 80 - Esbjerg Havn**

Erstat planer med medfølgende planer.

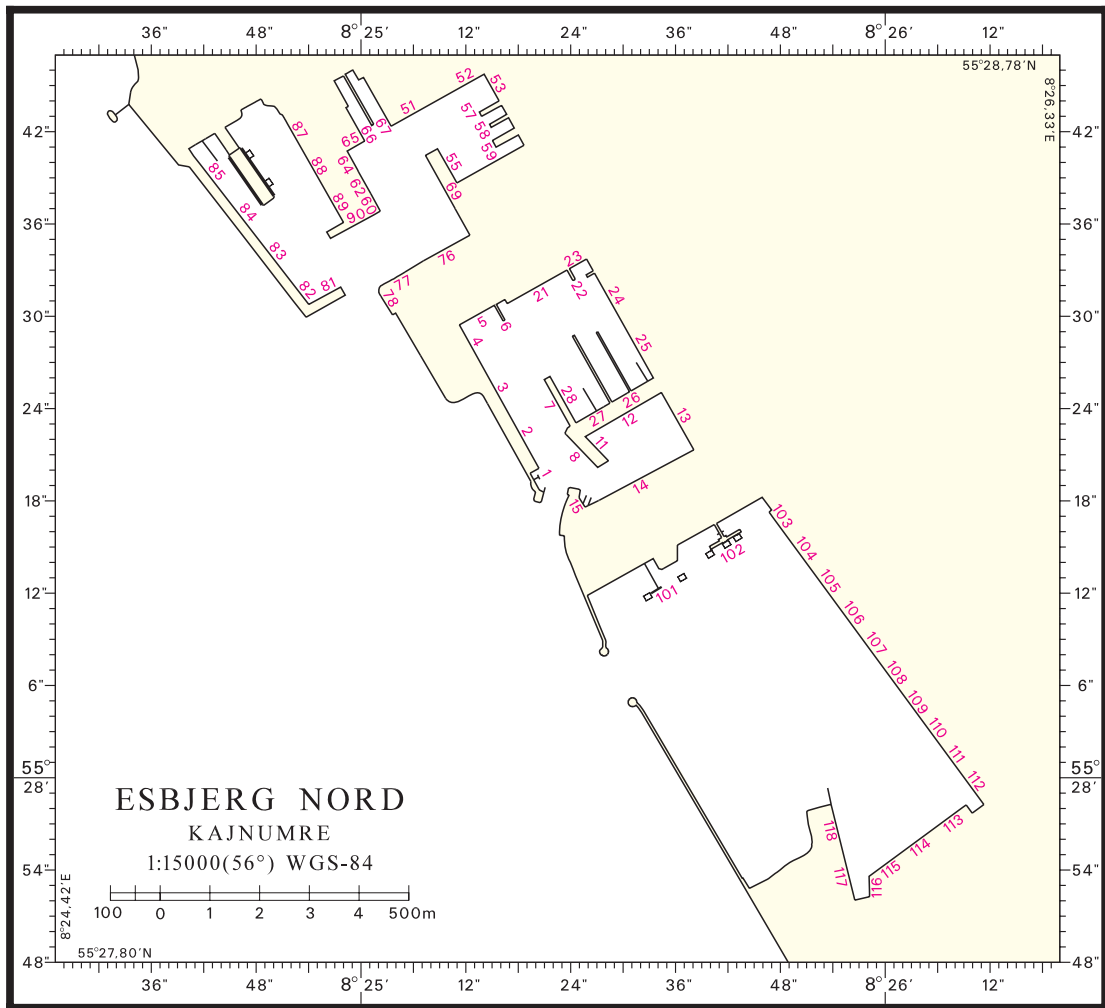
(21/631 2011)

SEJLADSANVISNINGER***Den grønlandske Lods I, Vestgrønland***

Side 187:

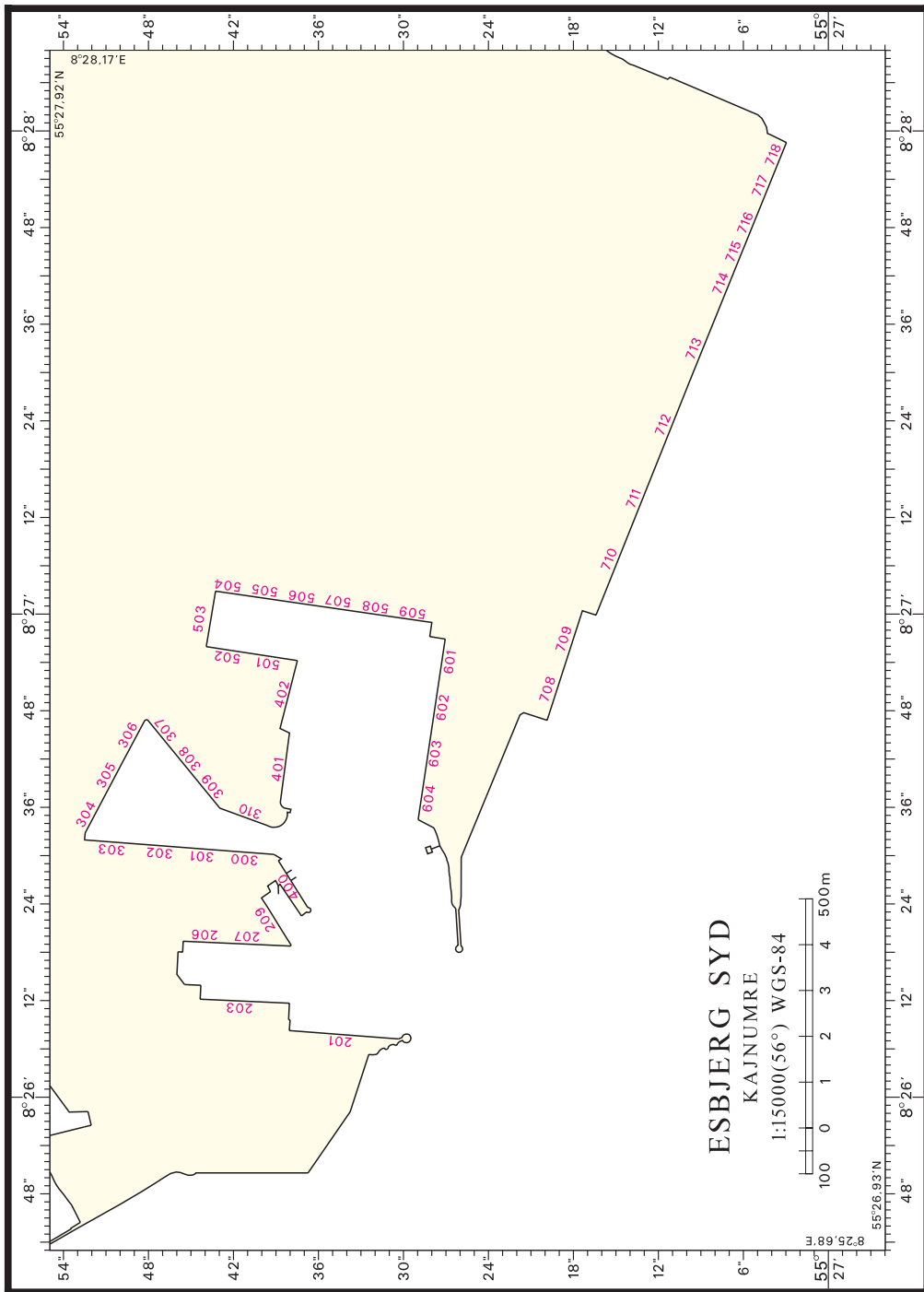
I fig. 101, Talerulik Fortøjningsplan, tilføjes 651  på øens E-ligste punkt.

(21/634 2011)



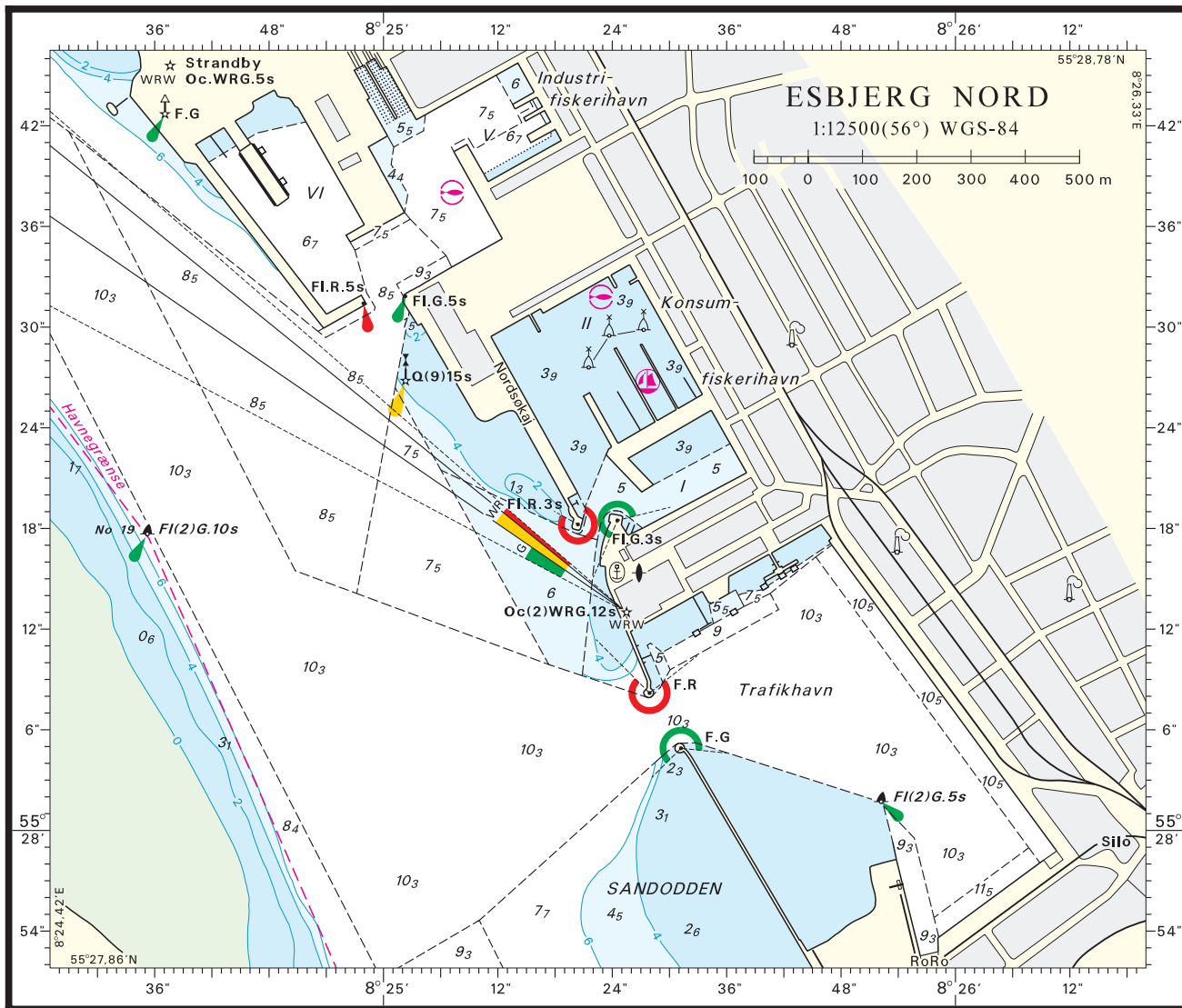
© Kort & Matrikelstyrelsen

Søkortrettelser 21 2011

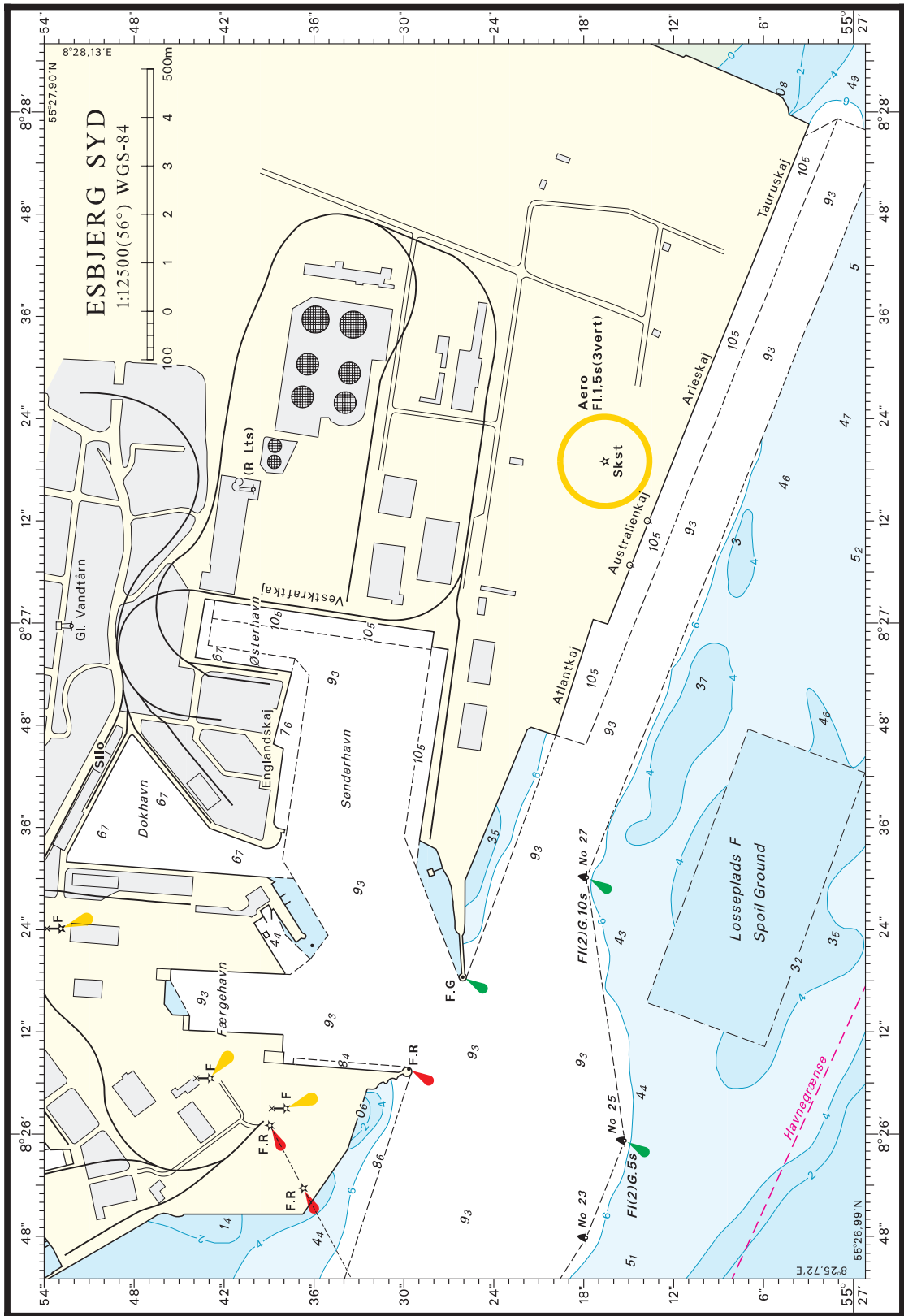


© Kort & Matrikelstyrelsen

Søkortrettelser 21 2011

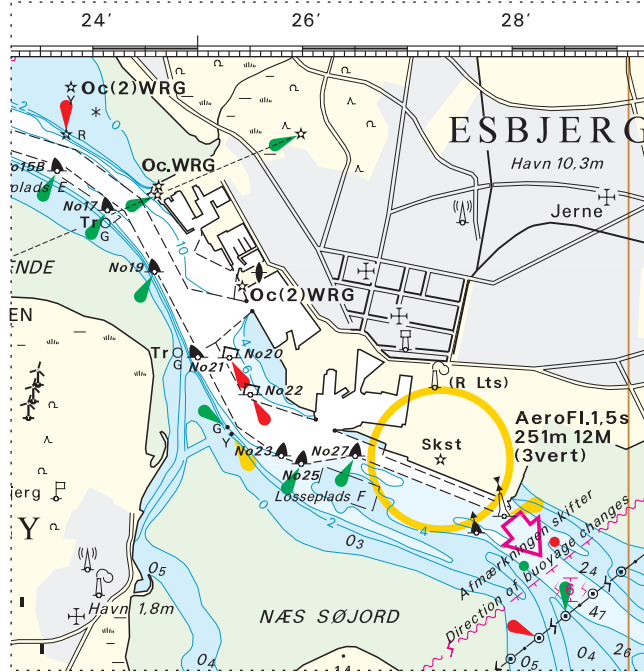


Søkortrettelser 21 2011



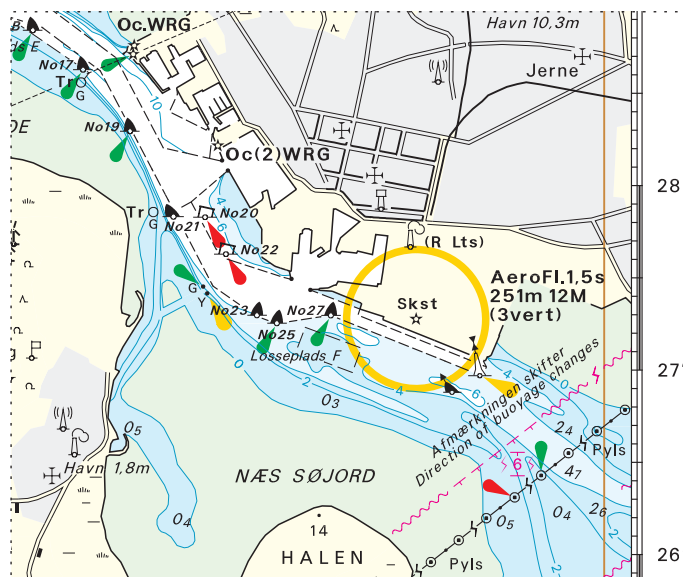
© Kort & Matrikelstyrelsen

Udsnit kort/Block chart 60



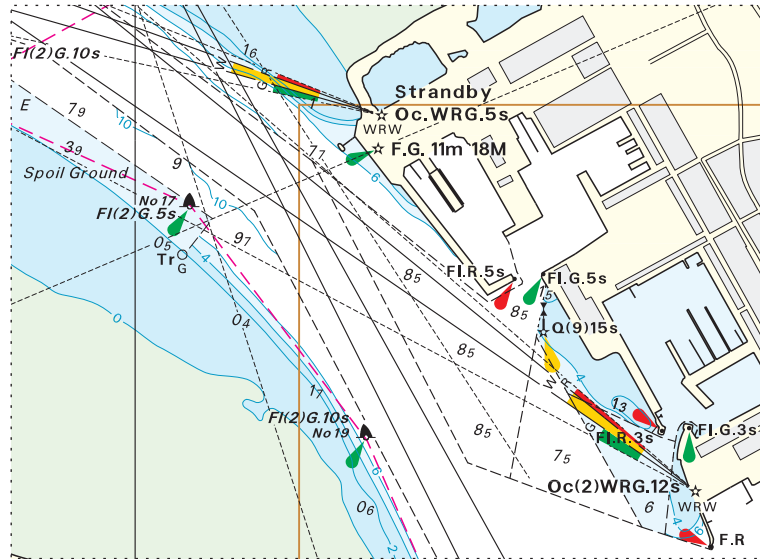
Søkortrettelser/Chart Corrections 21/200 2011

Udsnit kort/Block chart 61



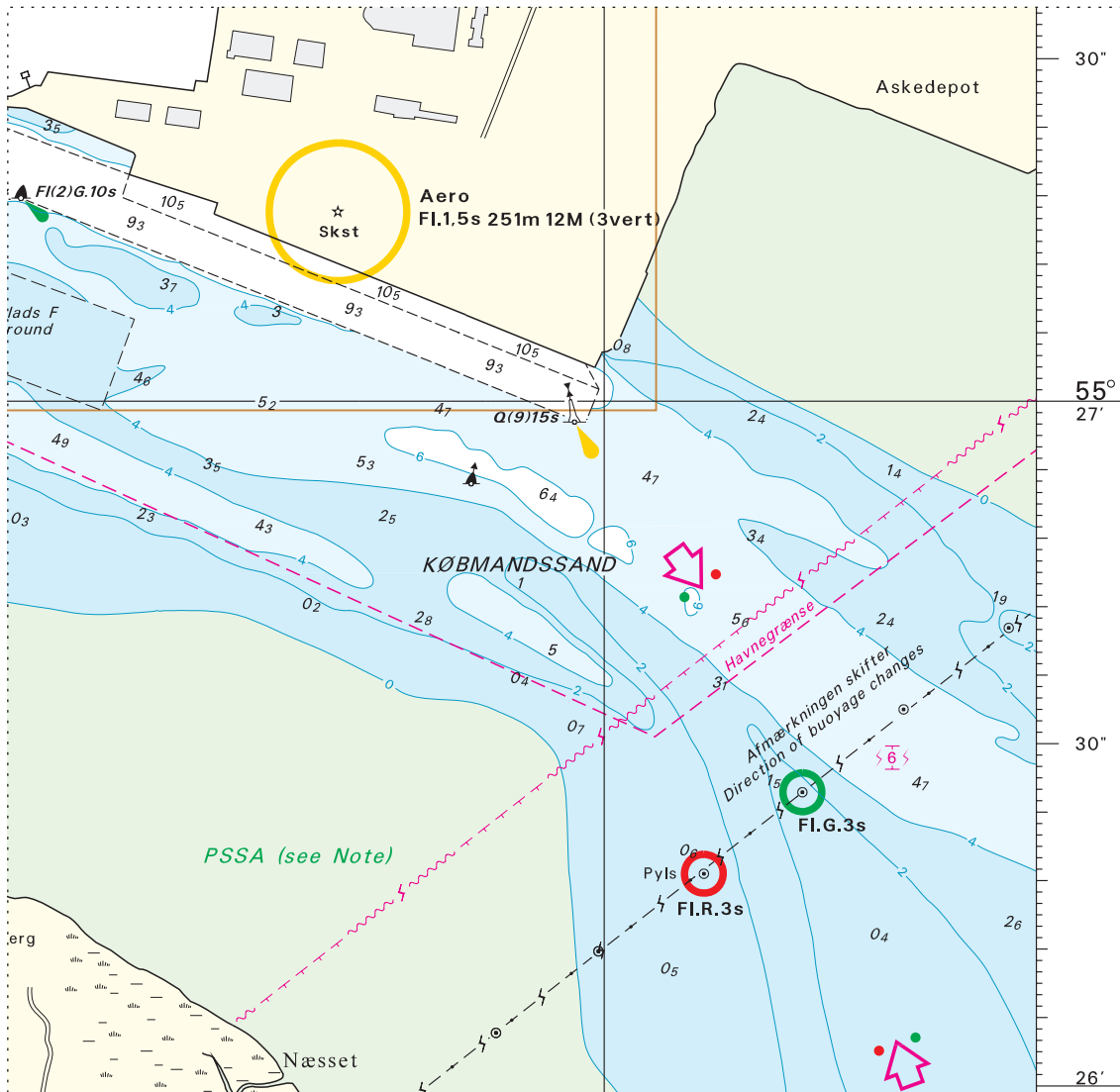
Søkortrettelser/Chart Corrections 21/201 2011

Udsnit 1 kort/Block 1 Chart 95

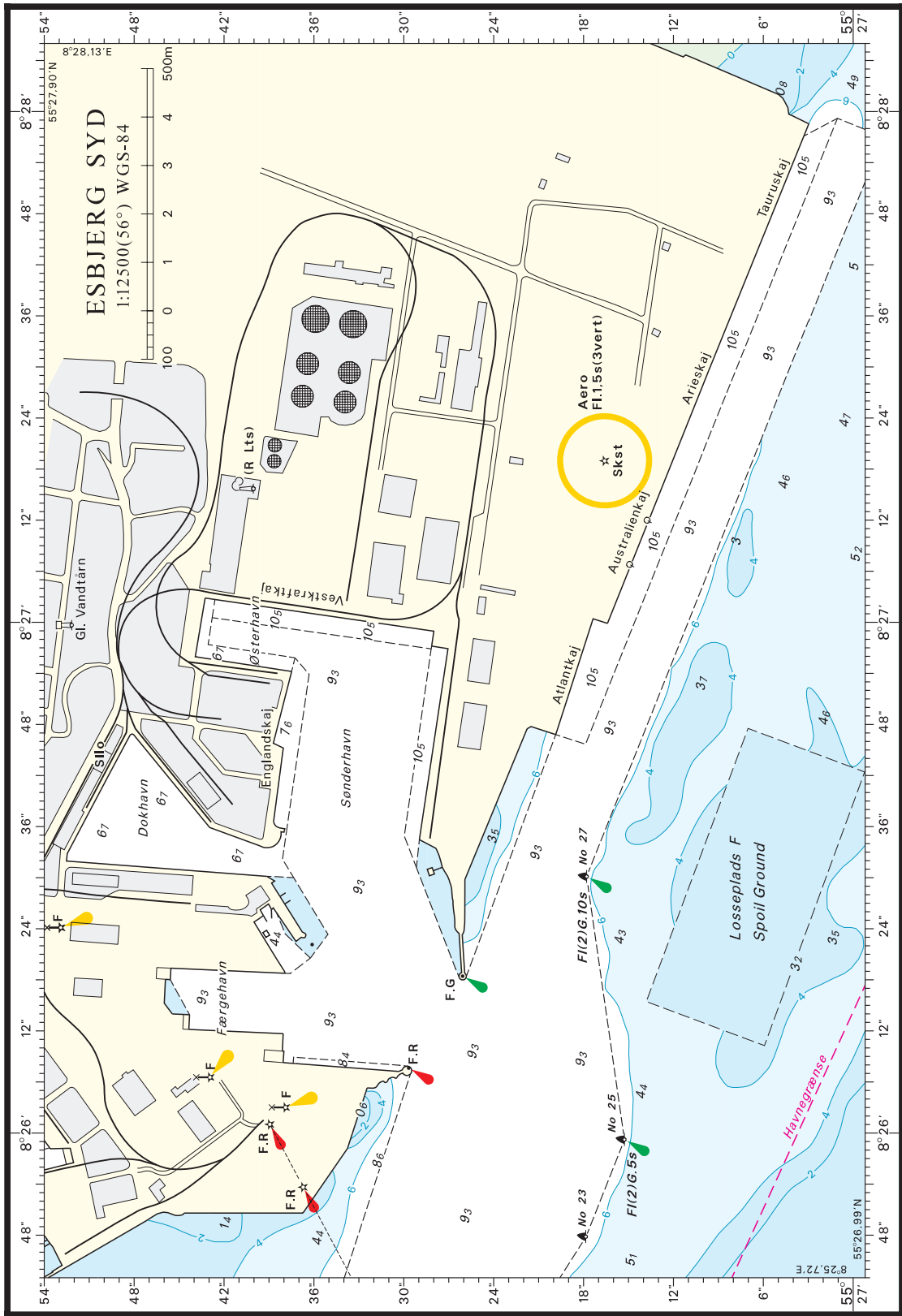


Søkortrettelser/Chart Corrections 21/202 2011

Udsnit 2 kort/Block 2 chart 95



Søkortrettelser/Chart Corrections 21/202 2011



© Kort & Matrikelstyrelsen

Søkortrettelser/Chart Corrections 21/203 2011